



# YOUR EWVP SOLUTIONS GUIDE

**BOOM** SHERRIN

# At BOOM Sherrin we're much more than just an elevated work platform supplier.

For more than 40 years now we've been offering tailored EWP solutions from a comprehensive equipment fleet Australia-wide; backed by on-call sales and service assistance; reliable solutions and one of the safest working practices in the industry.

## GRADEABILITY CONVERSION

### Gradeability

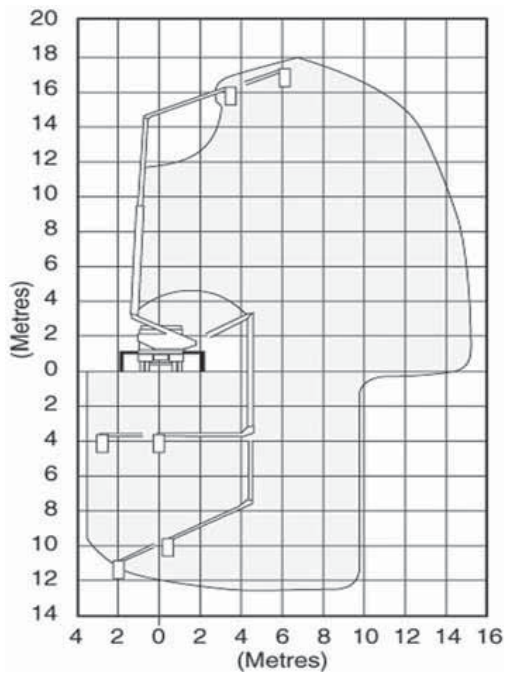
5%	10%	15%	20%	25%	30%	35%	40%	45%	50%	55%	60%
2.86	5.71	8.53	11.31	14.04	16.70	19.29	21.80	24.23	26.57	28.81	30.96

### Degrees

### PLEASE NOTE

Every effort has been made to accurately specify our equipment in the following pages. Due to availability of equipment actual makes & models supplied may vary from what is indicated. BOOM Sherrin specifies "Working Height" at a standard additional height of 6ft (1.8m) above the manufacturer's specified platform height.

## Range Chart



# UNDER-BRIDGE INSPECTION UNIT

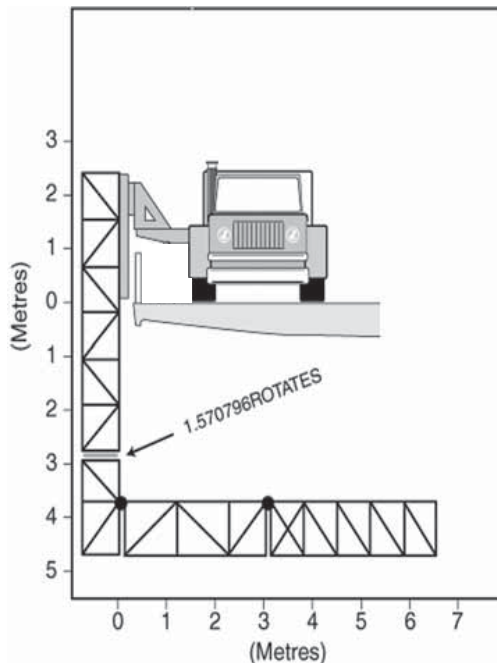
For more information on this equipment or if you require a free onsite inspection, contact our team

# 136 132

## Specifications

Max working height	18 m
Max work extension under bridge	8 m
Safe working load	200 kg
Max working radius	15 m
Stabiliser spread (at 180°)	3.40 m
Stabiliser spread (at 360°)	4.50 m
Max work depth below ground level	12 m
Travelling height	3.60 m
Travelling width (stowed)	2.50 m
Travelling length	8 m
Overall weight	12200 kg
240 volt outlet in basket	
This unit can be mobile when boom is overside	
Road Rail units available (STD & Wide gauge only)	14000 kg

## Range Chart



# MOOG UNDER-BRIDGE MAINTENANCE

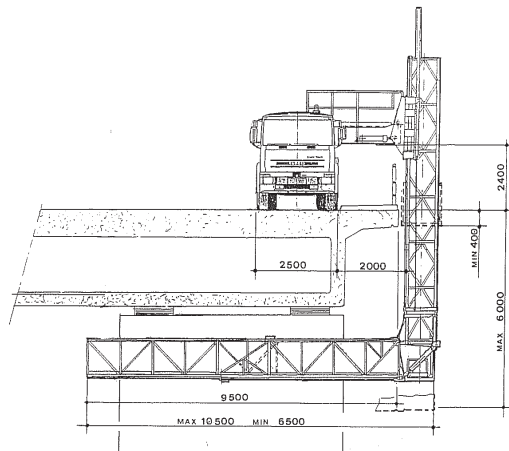
For more information on this equipment or if you require a free onsite inspection, contact our team

# 136 132

## Specifications

Length of platform (closed)	4.50 m
Length of platform (extended)	7 m
Width of platform	1 m
Space required on bridge	2.50 m
Safe working load	400 kg
Max Load at end of telescopic platform	200 kg
Min Lowering depth	1.80 m
Max Lowering depth	5 m
Rotation of platform	180 °
Travelling length (stowed)	8.50 m
Travelling width (stowed)	2.20 m
Travelling height (stowed)	3.75 m
Overall weight (approx)	10400 kg
240 volt outlet in basket	
Road Rail units available (STD & Wide gauge only)	

## Range Chart



DISTRIBUTED PAYLOAD ON PLATFORM : 500 Kg  
CONCENTRATED PAYLOAD AT TIP : 300 Kg

# BARIN UNDER-BRIDGE MAINTENANCE

For more information on this equipment or if you require a free onsite inspection, contact our team

# 136 132

## Specifications

Length of platform (closed)	6.50 m
Length of platform (extended)	10.50 m
Width of platform	1.20 m
Space required on bridge	2.50 m
Safe working load	500 kg
Max Load at end of telescopic platform	300 kg
Min Lowering depth	0.40 m
Max Lowering depth	6 m
Rotation of platform	180 °
Travelling length (stowed)	9.10 m
Travelling width (stowed)	2.50 m
Travelling height (stowed)	4 m
Overall weight (approx)	15000 kg
240 volt outlet in basket	



136 132 **BOOM SHERRIN**

[www.boomsherrin.com.au](http://www.boomsherrin.com.au)