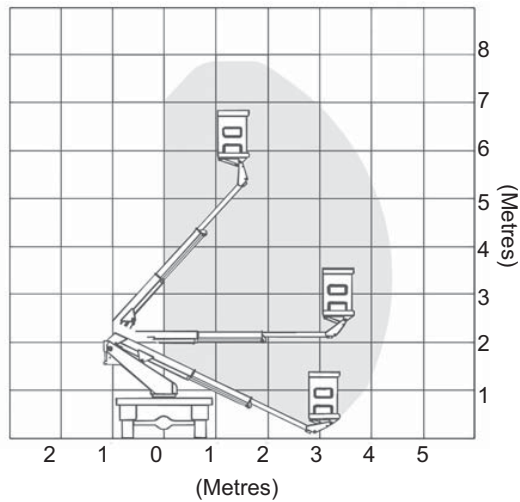


## Range Chart



## 8m LIFT TRAVEL TOWER

For more information on this equipment or if you require a free onsite inspection, contact our team

# 136 132

## Specifications

Max working height	8 m*
Max working radius at max height	2 m
Safe working load	200 kg
Max working radius	4.40 m
Slew	360 ° Continuous
Travelling height	2.20 m*
Travelling width	1.90 m*
Travelling length	5.10 m
Overall weight (approx)	2100 kg

\*2 stabilisers at rear