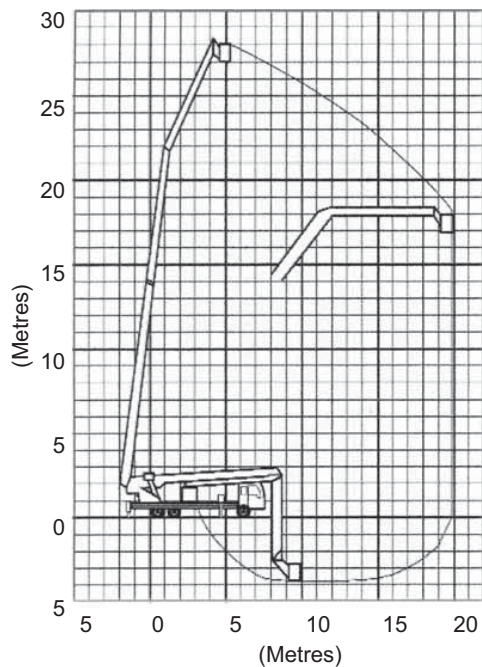


Range Chart



28m GLOVE & BARRIER TRAVEL TOWER

For more information on this equipment or if you require a free onsite inspection, contact our team

136 132

Specifications

Max working height	28.50 m
Working radius at max height	5 m
Safe working load	350 kg
Max working radius	15 m
Stabiliser spread	5 m
Max working depth below ground level	3 m
Travelling height	4 m
Travelling width	2.40 m
Travelling length	11 m
Overall weight (approx)	15000 kg
Insulated units available	