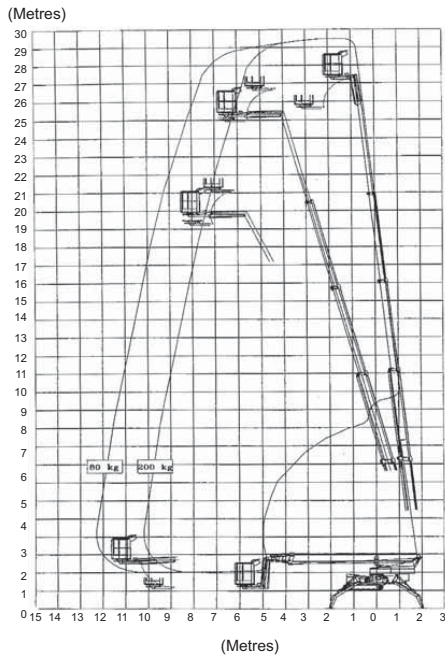


## Range Chart



# 30m SPIDER LIFT

For more information on this equipment or if you require a free onsite inspection, contact our team

# 136 132

## Specifications

Maximum working height	29.70 m
Maximum outreach	12.60 m
Maximum basket load	200 kg
Rotation	360 °
Basket size	1.25 x 0.80 x 1.10 m
Turnable basket	41 °
Transport length	8 m
Transport height	1.98 m
Transport width	1.10 m
Operational width	5.30 / 3.45 m
Weight	3775 kg
Gradeability	35 %
Crawler track length	1.74 m
Hydraulic stabilisers	
Proportional controls	
Hydraulic propulsion	
240 volt outlet to basket	
Radio controls and white tracks standard	